

Part number: USC-22[®] 

The **USC-22** controller is intended as a **RoHS** compliant replacement for any stepper Controller

Stepper controller: Single axis miniaturized controller for laboratory and industrial applications.
Control loops: Available but not standard. Position, velocity acceleration
Parameters control: Position, velocity, acceleration, torque. Adjustable “on the fly”.
Computer Interface: Standard RS-232 or **USB**. Also analog control and position display.
Resolution: Down to 0.04mm depending on the motor used.
Networkable: Up to 7 boards can be controlled from one PC with one Power Supply
Inputs and Outputs: Digital and analog inputs and outputs for conversions and data acquisition.
Power requirements: Max. 30VDC at 3A.
Available options: Up to 7 boards networked, **Joystick**, Analog drive output, Wireless interface.
Software: Terminal. LabView Drivers and DEMO software.
Recommended actuator: SuprMike[®], LDC-25, LDC-50.
Dimensions: OEM size 4”x 3”. Also available other board sizes and packages.

No external amplifier is needed to control motors of any size up to 30V and 3Amps.

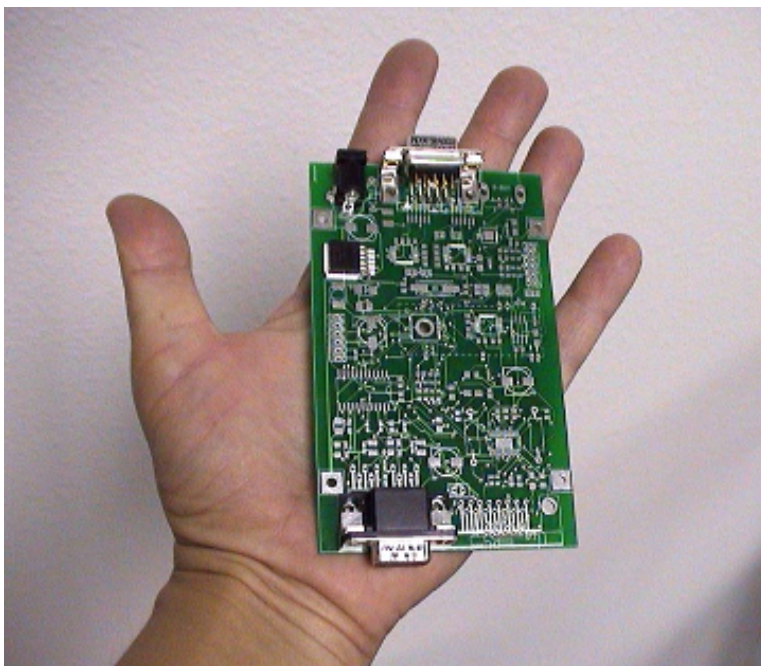
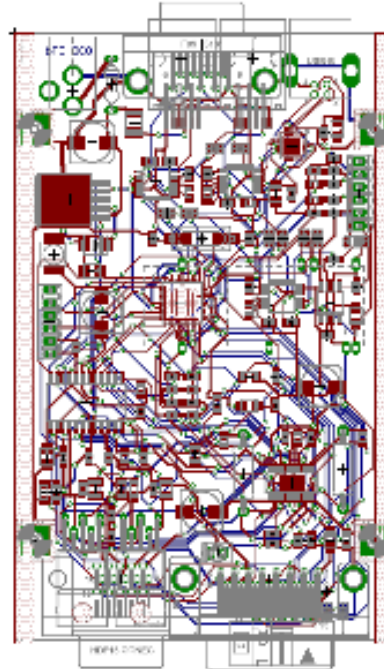


Photo (OEM version)



Layout

The **VGA** type connector pin-out is listed below:

Pin 1 - 2	A – A'
Pin 3 - 4	B – B'
Pin 5, 6, 7,	NC
Pin 8	+5V for Limit switches
Pin 9	Negative limit switch (optional)
PIN 13, 15	GND
Pin 11	Min STOP or Home reference
PIN 12	Min deceleration
PIN 14	Max deceleration
PIN 15	Max. STOP