

First operation for **DSP-xx**, **SSP-xx** and **SSQ-xx** controllers

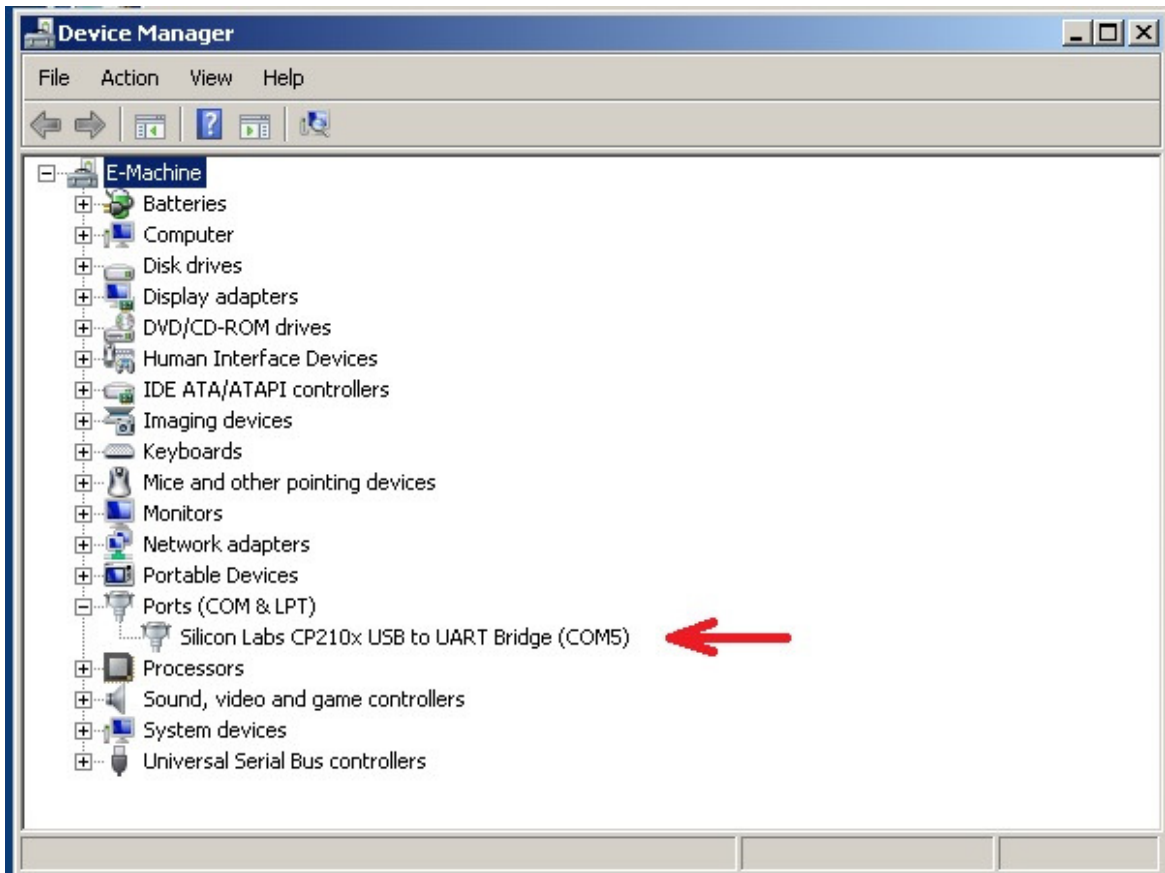
Depending on the options ordered this controller comes equipped with these PC interfaces:

- RS232 (standard) will connect to any COM port of the PC. No driver installation required.
- USB (works as a virtual COM port and requires a driver to be installed first) or
- USB interface + RS232 interface (usually used for multi axis control)

To operate the controller equipped with USB interface you must first download and install the USB driver located **at the bottom of our website page**.

<https://plequipment.com/product/Stepper-Servo-Motor-Controller-SSP-21-RoHs>

Then connect the USB cable between the controller and your PC but **don't connect the power**. The PC will notify you that new hardware was detected and if the USB driver was installed correctly it will be listed in the Windows Device Manager as in the screen capture below. Observe the number after the COM port. Can be any number (1- 6 is preferred for LabView use).



From the same webpage you can download the **Quick Start** and the **User Manual**. **These documents** will further guide you on how to operate the controller.

Some simple DEMO programs written in **Visual Basic** and **LabView** (32bit version) are also available there.