

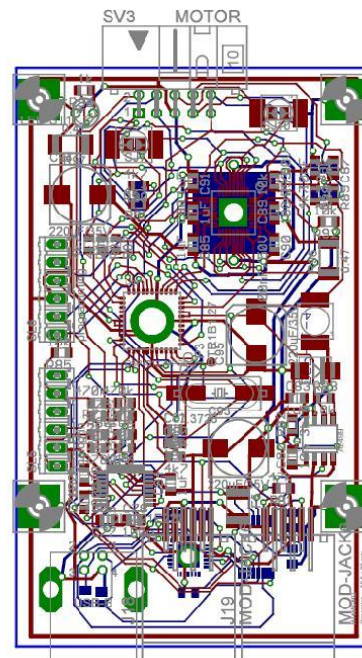
**Part number:**

**SSP-21<sup>®</sup>** 

**Stepper controller:** 2 Phase Single axis miniaturized for laboratory and industrial applications.  
**Control loops:** Open loop.  
**Parameters control:** Position, velocity, acceleration, torque all adjustable “on the fly”.  
**Computer Interface:** **USB, RS-232.**  
**Resolution:** Depending on the micro stepping used used.  
**Networkable:** Multiple boards can be controlled from one PC with one Power Supply  
**Inputs and Outputs:** Digital and analog inputs and outputs for conversions and data acquisition.  
**Power requirements:** Max. **24V DC at 2A.**  
**Microstepping:** Continuous wave with user selectable micro stepping value  
**Software:** Terminal. LabView Drivers and DEMO software.  
**Programming:** Intuitive 2 letter mnemonic. User defined **MACRO commands** included.  
**Recommended actuator:** 2 Phase stepper motors. Max 2A per phase.  
**Dimensions:** OEM size 2”x 3”. Also available other board sizes and packages.  
**Enclosed versions:** See page 2 for the available enclosures.



**Top (OEM version)**



**Layout**

The pin-out is listed below:

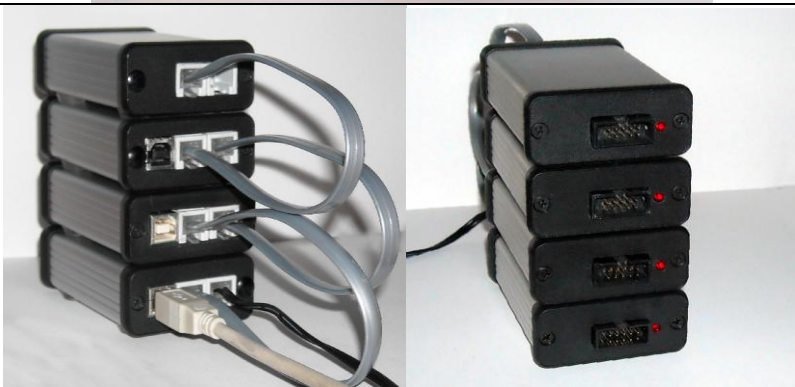
<b>Pin 1</b>	Phase A +
<b>Pin 2</b>	+5V
<b>Pin 3</b>	Phase B +
<b>Pin 4</b>	Phase B -
<b>Pin 5</b>	Ground.
<b>Pin 6</b>	Phase A-
<b>Pin 7</b>	Reference switch (optional)
<b>Pin 8</b>	Limit +
<b>Pin 9</b>	Limit -
<b>Pin 10</b>	GND



- One axis controller in no enclosure.
- Networking installed (2 phone con.)
- USB option installed



One axis controller in AI enclosure.



4 controllers in 4 enclosures, connected together can be controlled from one USB port.

User can control from HyperTerminal, LabView, Visual Basic, etc...



3 axis controllers in one enclosure with USB interface for PC.

User can control from HyperTerminal, LabView, Visual Basic, etc...